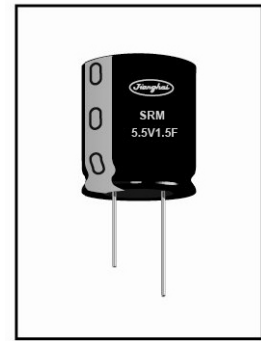


■ Features

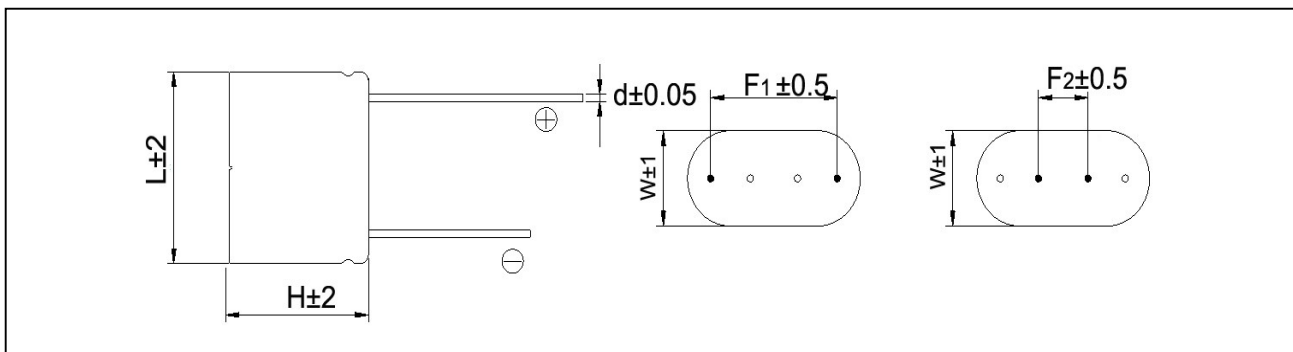
- Double cells in series
- Higher voltage
- RoHS compliant
- Consumer electronic
- AMR
- DC-DC converters



Items	Characteristics		
Rated Voltage	5.5V		
Operating Temperature Range	-40 ~+65°C (-40 ~+85°C@4.6V)		
Surge Voltage	5.7V		
Capacitance Range	0.5~5 F		
Capacitance Tolerance (25°C)	-10~+30%		
Temperature Characteristics	The specifications shall be met at category temperature range from -40°C to 65°C	Capacitance range	Within 30% of the value at 25°C
		ESR	Less than 2 times of the initial specified value
High Temperature Loaded	The specifications shall be met after rated voltage applied at 65°C for 1000 hours	Capacitance range	Within 30% of the initial value
		ESR	Less than 2 times of the initial specified value
High Temperature Storage	The specifications shall be met after storage at 65°C for 1000 hours	Capacitance range	Within 30% of the initial value
		ESR	Less than 2 times of the initial specified value
Cycle Life	The specifications shall be met after 500,000 cycles at 25°C, cycle of charge/discharge from V_R to $1/2V_R$	Capacitance range	Within 30% of the initial value
		ESR	Less than 2 times of the initial specified value

Dimensions

mm



Standard Ratings for SRM Series

U_R (Surge Voltage) Code	Rated Cap. 25°C, (F)	Impedance		Leakage Current (72hrs) (mA)	Size WxLxH (mm)	F (mm)	d (mm)	P/N
		ESR _{DC} (mΩ)	ESR _{AC} (1KHz) (mΩ)					
(v)	(F)	(mΩ)	(mΩ)	(mA)	(mm)	(mm)	(mm)	-
5.5 (5.7) 5R5	0.5	800	400	0.008	8.5 x 17 x 17	12/5.0	0.6	SCMDMR5R5504QRH081717E
	1	500	260	0.010	8.5 x 17 x 17	12/5.0	0.6	SCMDMR5R5105QRH081717E
	1.5	300	160	0.012	8.5 x 17 x 23	12/5.0	0.6	SCMDMR5R5155QRH081723E
	2.5	260	140	0.016	11 x 21 x 23	15.5/5.5	0.6	SCMDMR5R5255QRH112123E
	3.5	160	110	0.02	11 x 21 x 27	15.5/5.5	0.6	SCMDMR5R5355QRH112127E
5	120	80	0.03	13 x 26 x 27	18/8.0	0.6	SCMDMR5R5505QRH132627E	